

TS



SOCO
INNOVATION

STREET HUNTER



FANGS LIGHT, ILLUMINATE THE NIGHT

The symmetrical layout of the sharp fang-shape headlights gives the bike more sportive and modern look. Full LED lighting system deliver brighter and wider illumination.

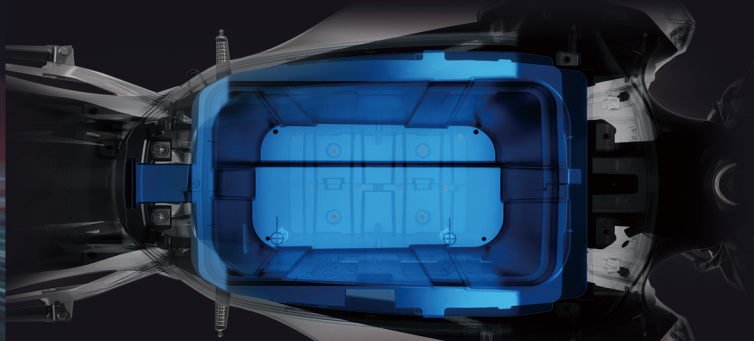
RACING-STYLE SIDE WINGS, COOLER AND MORE STABLE

The all-new racing-style side wings layout gives the vehicle more sportive look together with better stability while riding



LARGER STORAGE SPACE, SIMPLIFIED TRAVEL

Enlarged storage space makes your travel easier and more convenient.



LOWER CENTER OF GRAVITY LAYOUT, BETTER CONTROL

Low battery position lowers the center of gravity and enhances the manoeuvrability of the bike. Making your urban travel easier than ever.



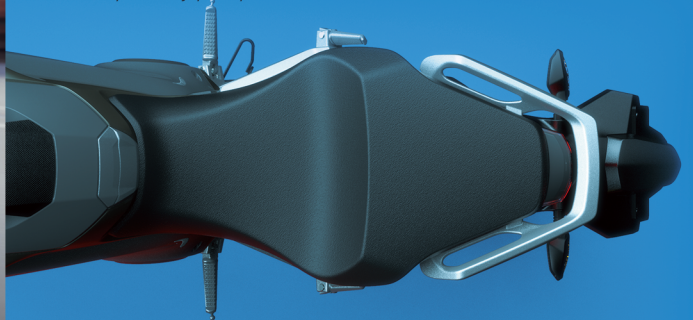
SPORTS STYLING, BUILT FOR ACTION.



2038mm*788mm*1085mm massive body, highlighting the sense of volume, Overall streamlined design with side wings, gives the vehicle more powerful and muscular look, a unique carrier to show your personality.

THREE-DIMENSIONAL RACING CUSHION MAKES RIDING MORE FUN

The thickness of the foam in the center of the cushion is 52mm, and the length of the cushion is 575mm. Upgraded seat cushion, built for two riders, allows you to enjoy every second on the road.

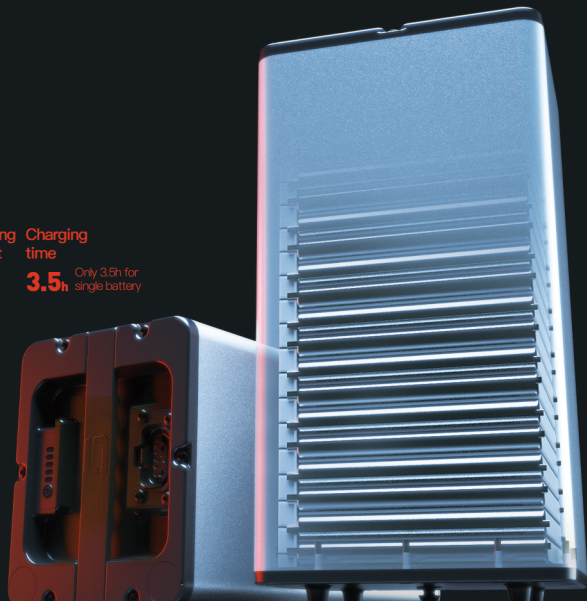


EXCELLENT BATTERY PERFORMANCE

Successfully passed various UN38.3 tests in compliance with international safety standards ATL high capacity pouch cell 60V32AH (dual battery – double range) Max range up to 140km with dual battery (lab tested under @45km/h conditions) .

Charging current
10A

Charging time
3.5h Only 3.5h for single battery



HIGH POWER MOTOR

With a max power 3500W hub motor, the maximum torque 180N·m, and the maximum speed 75km/h – cruise freely through city streets.

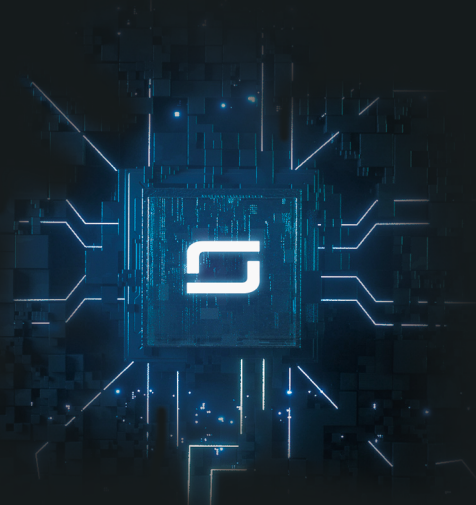
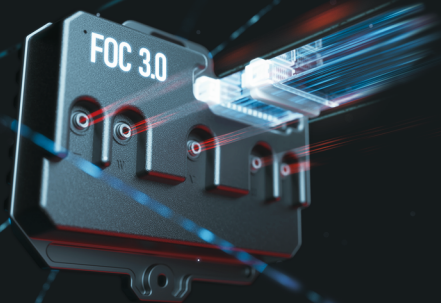
2500W 180N·M 75KM/h

EVERYTHING IS POSSIBLE

ECU Communication System optimized wiring method, get higher stability and better safety performance with electronic control system. Stronger anti-interference ability, faster and more stable information transmission, Supports upgraded remote OTA (ECU, control ride, BMS) various vehicle functions

THE FUTURE IS NOW

FOC vector controller version 3.0 cooperates with the self-developed BMOS intelligent interactive system, the input efficiency has been increased by 16%, upgraded new power system, the torque vector control method and high-precision control calculation program is used to optimize the performance of the electric drive system. More powerful and highly efficient.





BRAKING SYSTEM FOR SAFE TRAVEL

CBS braking system, ensures splitting braking force between front and rear break discs, reduces braking path and increases safety efficiency of the vehicle.



BIGGER TIRES DELIVERING PURE DRIVING PLEASURE

Large-size tires cater to multiple road conditions, safe and non-slip. Front tires – 100/80-17, rear tires – 120/70-17. Bring the riding experience to a whole new level even through muddy roads.

The Main Specifications			
Type:	Lithium battery – Removable	Max Speed:	75KM/H
Battery Capacity:	60V32Ah	Distance Range:	120KM @ 45KM/H Average Speed with 75kg driver
Charging Time:	3–3.5H/each battery	Climbing Capacity:	≤26°
Weight (Excl. Battery):	89KG	Type:	Hub Motor
LxWxH:	2038x788x1085	EEC Power:	2500w
Ground Clearance:	170mm	Max Power (Speed Release):	3500w
Fr/Rr Suspension:	Hydraulic	Rated Torque:	40 N·m
Brakes:	Fr.Disc (240mm) / Re.Disc (180mm) CBS		
Vehicle Configuration			
One-piece Footrest	LED headlight/LED Position light/LED Turn signal/LED Rear light		
Anti-theft alarm	On-board Charging/Battery Individual Charging		
Intelligent Remote Control	One-press start		

REGULAR



SPECIAL

